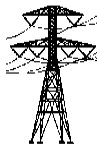


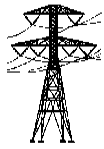
## TRANSFORMER TEMPERATURE MONITOR AND COOLING CONTROL SYSTEM

**BCI Bulletin BCI-TTM-48DC Revision 6/28/2009**

<b>CONTENTS</b>	<b>Page</b>
<b>I. Description of Operation</b>	<b>2</b>
Main menu & keypad	4
Configuration menu & lookback example	5
Displays: ambient temp, % stage loading, primary amps	3
Calibration displays	6
Cable interface & analog scaling values	6
Functional diagram	7
Configuration jumpers	8
Communications	9
Alarm LEDs	10
Hysteresis	10
<b>II. Installation</b>	<b>11</b>
Front View TTM-48DC	11
Mounting	12
Calibration [also refer to p 4 & 5]	13,14
<b>III. Specifications</b>	<b>15</b>
Ordering information	16



Barrington Consultants Inc.  
2239 Valdes Court, Santa Rosa, CA 95403 USA  
1-707-527-8254 Telephone. 1-707-542-9730 fax  
www.barringtoninc.com



## I. Description of Operation

The model TTM-48DC is a solid state transformer temperature monitor that is SCADA ready and monitors both oil and winding temperatures. The **TTM-48DC** is designed for easy installation on single or three phase single tank transformers.

In addition to temperature monitoring and cooling control functions there are two new Barrington innovations added for utility convenience and to extend the useful life of the transformer. (1.) The "LOOKBACK" feature is provided for ambient compensation. This feature allows the utility to compensate for hot spells with ambient temperature set back capability. This feature can be used to start the cooling system at a lower temperature for hot spells and can effectively provide a cooling "head start." (2) The cooling monitor feature can be set to alarm for any reduced cooling current. (i.e. One or two fans not running.) Another selectable feature is provided to exercise the cooling system for a ten minute period each 24 hours. **The "alternate cooling stage" feature allows a user to select the mode that switches between the two cooling stages every 168 hours. This feature, if enabled, allows the unit to swap the cooling stage that is selected to operate as the first stage to exercise and use the stages equally. This can be both a labor saving and a desired maintenance feature.**

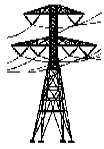
Local indication includes calculated winding temperature, calculated peak winding temperature, top oil temperature and peak top oil temperature with manual reset. Winding temperature is obtained using a single pt100 RTD probe and one or three snap on current transformers with calculations to closely approximate actual conditions. Displays are .39" backlit LCD's that continuously display all four temperatures simultaneously. Communications include SCADA ready outputs, dry contacts for local annunciation and a RS232/485 port. The TTM-48DC measures the actual Top Oil temperature in the transformer and measures the actual current in each phase of a transformer using three supplied snap-on current transducers. The current is displayed as a percentage of full scale for each phase, using only highest phase for calculation. The winding temperature over top oil temperature is calibrated at maximum based upon the transformer manufacturer's "heat run." This insures that at higher temperatures, where winding temperature is important, the readings are very accurate. In testing per National standards, placing the probe in a calibration oil bath, the TTM-48DC measurement accuracy is within plus/minus 0.2 degrees C compared with the calibration temperature of the oil bath. Readings are displayed as a directly linear curve over top oil temperature. For example:

<u>Top oil temperature</u>	<u>Load</u>	<u>Winding temperature</u>
40 deg C	0 amps	40 deg C
80 deg C	Full Load	80 + heat run

The **TTM-48DC** is housed in an 8" X 10" X 6" NEMA 4 windowed enclosure. The enclosure is designed to be mounted on an existing transformer control cabinet. Ambient operating temperature range is -40 degrees C to 70 degrees C. Winding and oil temperatures are both obtained using a single RTD probe in the top oil well of the main transformer tank and one or three snap on current transformers. Installation requires connecting supplied snap on CT's (current transducers) to existing secondary current and cooling supply circuits. Installation is quite easy. Operation is very reliable. Power requirements are 48VDC. The analog outputs can be connected to an existing SCADA system. The analog outputs supplied are 0 - 5 VDC, 4-20 ma, or 0-1ma "switchable" for oil and winding temperatures. The **TTM-48DC** is designed to meet IEEE/ANSI C37.90 specifications for protective relaying applications.

## TTM-48DC FRONT PANEL CONTROL AND DISPLAY

The new **TTM-48DC** design includes a 2 line by 16 character alpha-numeric display and a five key keypad. This document outlines the basic operation and concepts of the various displays. The TTM-48 DC has a standard display of temperature data. This standard display will be shown at all times except when a user has entered one of the two menus to setup the control of the TTM-48 DC . **If the user leaves the TTM-48DC in one of these menus it will timeout and return to the standard display.**



## TTM DISPLAY SCREENS

### MENU

(PRESS MENU)

MANUAL FANS  
OFF

OIL TEMP ALARM  
80 °C

WIND TEMP ALARM  
120 °C

STAGE 1 OIL  
70 °C

STAGE 1 WIND  
70 °C

STAGE 1 CURRENT  
80 %

STAGE 2 OIL  
80 °C

STAGE 2 WIND  
80 °C

STAGE 2 CURRENT  
80 %

HYSTERESIS  
0.1 °C

ALARM DELAY  
10.0 SEC

### CONFIG

(PRESS MENU FOR 3 SECONDS)

COMM MODE  
RS232

COMM RATE  
9600

COMM FORMAT  
8-N-1

COMM ADDRESS  
0

COMM PERIOD  
0.1 MIN

FULL SCALE RISE  
55.0 °C

ANALOG 1 OUT  
0-1 ma

ANALOG 2 OUT  
0-1 ma

RTD 1 OFFSET  
0.0 °C

RTD 2 OFFSET  
0.0 °C

24 HOUR FAN CYCLE  
0 1=ON

FAN ALTERNATE  
ON OFF

LOOKBACK PERIOD  
48 HOURS

LOOKBACK TEMP  
150 °C

LOOKBACK HOURS  
12 HOURS

LOOKBACK SETBACK  
20.0 °C

### NEXT

(PRESS NEXT)

AMBIENT TEMP  
25 °C

STAGE 1 STAGE 2  
0.0 % ° 0.0%

PHASE A - B - C  
0% 0% 0%

### CALIBRATE

(PRESS NEXT & PREV)

ANALOG#1 = 1ma  
3200

ANALOG#2 = 1ma  
3200

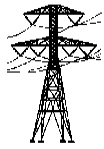
STAGE #1  
0%

STAGE #2  
0 %

PHASE A  
0%

PHASE B  
0%

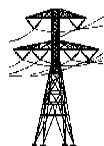
PHASE C  
0%



## The five key pad keys:

- MENU** When pressed and released the TTM-48 DC will start the main menu sequence of displays to allow the user to setup the normal operating parameters. When held for three seconds the TTM-48 DC will enter the configuration menu. This secondary menu allows the user to setup the configuration and calibration of the TTM-48 DC .
- NEXT** When the TTM-48DC is displaying the standard display no action is taken. When in the main or secondary menu pressing this key will advance to the next item in the menu's sequence.
- PREV** When the TTM-48DC is displaying the standard display no action is taken. When in the main or secondary menu, pressing this key will return to the previous item in the menu's sequence.
- ▽** When the TTM-48 DC is displaying the standard display no action is taken. When in the main or secondary menu, pressing this key will reduce the current parameter to the next possible value.
- △** When the TTM-48 DC is displaying the standard display no action is taken. When in the main or secondary menu, pressing this key will increase the current parameter to the next possible value.
- ▽ △** Simultaneously pressing both the **▽** **△** and will reset both peak temperatures to the current values.
- [MENU]** **Default display shows current top oil temperature, current calculated winding temperature, peak top oil temperature and peak calculated winding temperature.** The following menus & lists detail the sequence for the TTM-48 DC . The COMM column indicates which values may be read and /or written through the communication link.

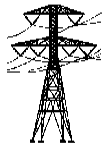
MAIN MENU DISPLAY	DESCRIPTION	COMM
MANUAL CONTROL ON OFF	Digital control to turn on the cooling system Range: Off (normal) On	
OIL TEMP ALARM	Top oil temperature alarm value Range: -40.0 to +180.0°C	yes
WIND TEMP ALARM	Calculated winding temperature alarm value Range-. -40.0 to +180.0°C	yes
STAGE 1 OIL	Stage 1 cooling control oil temperature Range: -40.0 to +180.0°C	yes
STAGE 1 WIND	Stage 1 cooling control winding temp Range: -40.0 to +180.0°C	yes
STAGE 1 CURRENT	Stage 1 cooling current minimum value Range: 0 to 100% of full scale cooling current	yes
STAGE 2 OIL	Stage 2 cooling control oil temperature Range: -40.0 to + 180.0°C	yes
STAGE 2 WIND	Stage 2 cooling control winding temp Range: 4.0.0 to +180.0°C	yes
STAGE 2 CURRENT	Stage 2 cooling current minimum value Range: 0 to 100% of full scale cooling current	yes
HYSTERESIS	Control Hysteresis value Range: 0.1 to 100.0°C	yes
ALARM DELAY	Alarm delay time Range: 0.1 to 999.9 seconds	yes



## Configuration Menus

The TTM-48 DC has secondary menus for controlling the communications, analog output signals and temperature calibration. TTM-48 DC also provides for calibration of the five current sensing inputs.

COMM. DISPLAY	ACTION	DESCRIPTION	COMM
COMM MODE <mode>	Down/Up to select	Communications mode Modes: RS232, RS485, RS485 Multi-point	no
COMM RATE <rate>	Down/Up to select	Communication baud rate Possible rates: 1200, 2400, 4800, 9600	no
COMM FORMAT < format >	Down/Up to select <i># bits- parity check- stop bit</i>	Communication data format Possible formats: 8-N-1, 7-N-1, 7-E-1	no
COMM ADDRESS < address >	Value entry for RS485 <i>Allows 1 modem to address multiple unit addresses</i>	Communication address (RS485 Multi only) Possible values: 0- 255	no
COMM PERIOD	Value entry <i>0.0 selects no output</i>	Communication output period Range: 0.0 to 3000.0 minutes	yes
FULL SCALE RISE	Value entry <i>Transformer manufacturer's heat run data</i>	Manufacturer's specified degrees (C) winding temperature increase over Top Oil temperature from heat run data. See pages 2 & 14	yes
ANALOG 1 OUT <mode>	Down/Up to select	Analog output 1 mode (Top Oil Temp) Possible modes- 0 -1ma, 4-20ma, 0-5v	no
ANALOG 2 OUT <mode>	Down/Up to select	Analog output 2 mode (Calculated Winding Temp) Possible modes- 0 -1ma, 4-20ma, 0-5v	no
RTD 1 OFFSET	Value entry <i>Determined by calibration to known temperature</i>	RTD 1 offset value in tenths of a degree Range: -20.0 to +20.0°C	read
RTD 2 OFFSET	Value entry <i>Determined by calibration to known tempera</i>	RTD 2 offset value in tenths of a degree Range: -20.0 to +20.0°C	read
24 HR FAN CYCLE <value>	Down sets to "1" [on] Up sets to "0" [off]	Automatically run cooling stages for 10 minutes each 24 hours	yes
FAN ALTERNATE ON OFF	Down sets to [on] Up sets to [off]	Automatically alternates cooling stages every 168 hours. (Weekly)	no
LOOKBACK PERIOD <value>	Value entry <i>Previous hour period for setback window</i>	Number of previous hours used to make setback decision Range: 0 to 120 hours	no
LOOKBACK TEMP <value>	Value entry <i>Temp threshold to trigger count toward setback</i>	Ambient temp above which is counted toward setback decision Range: -40 to 180 °C	no
LOOKBACK HOURS <value>	Value entry <i>Cumulative hour count above trigger threshold within setback window period</i>	Number of hours that the ambient temperature must be above the lookback temperature to trigger the setback Range: 1 to 120 hours	no
LOOKBACK SETBACK <value>	Value entry <i>Degrees C bias reduction from cooling mode start set point</i>	Number of degrees C that both stages of cooling start will be reduced Range: 0 to 180 °C	no



NEXT DISPLAY	DESCRIPTION	COMM
AMBIENT TEMP	Display ambient temperature (RTD #2)	no
STAGE #1 %      STAGE #2 %	Display cooling current percentage value	no
PHASE   A % - B % - C %	Display primary current (percentage of full scale)	no

CALIBRATION DISPLAY (Select Next and previous together)	DESCRIPTION	COMM
ANALOG #1 =	Used to set analog output to match jumper settings and Calibrate analog output #1	no
ANALOG #2 =	Used to set analog output to match jumper settings and Calibrate analog output #2	no
STAGE #1 AMPS <value>	Used to set full scale cooling current value for Stage #1	no
STAGE #2 AMPS <value>	Used to set full scale cooling current value for Stage #2	no
PHASE A AMPS <value>	Used to calibrate primary current value for A phase	no
PHASE B AMPS <value>	Used to calibrate primary current value for B phase	no
PHASE C AMPS <value>	Used to calibrate primary current value for C phase	no

## TTM-48 DC – IBM (PC) INTERFACE CABLE REQUIREMENTS

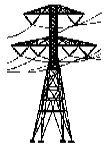
SIGNAL	TTM-48 DC	9 PIN SERIAL CABLE
<b>RS232</b>		
DATA FROM PC	PIN 3	PIN 3
DATA TO PC	PIN 4	PIN 2
GROUND	PIN 2	PIN 5
<b>RS-485</b>		
DATA +	PIN 5	
DATA -	PIN 6	
5VDC (Modem supply power)	Pin 1	

**RS232 TERMINAL SETTINGS:** Emulation – ANSI, Data Bits – 8, Parity – None, Stop Bits – 1, Flow Control – None, Keyboard Caps – On. (Remove JMP1)

HyperTerminal can be used. (supplied with Windows 98)

## ANALOG SCALING VALUES

	0 to 1 mA	4 to 20 mA	0 to 5 VDC
Temperature 0°C	0.200 mA	10.00 mA	1.00 VDC
Slope per °C	0.004 mA	0.050 mA	0.020 VDC
Minimum Scale	0 mA = -50°C	4 mA = -120°C	0 VDC = -50°C
Maximum Scale	1 mA = +200°C	20 mA = +200°C	5 VDC = +200°C



## TTM FUNCTIONAL EXAMPLE For Transformer Monitor and Cooling

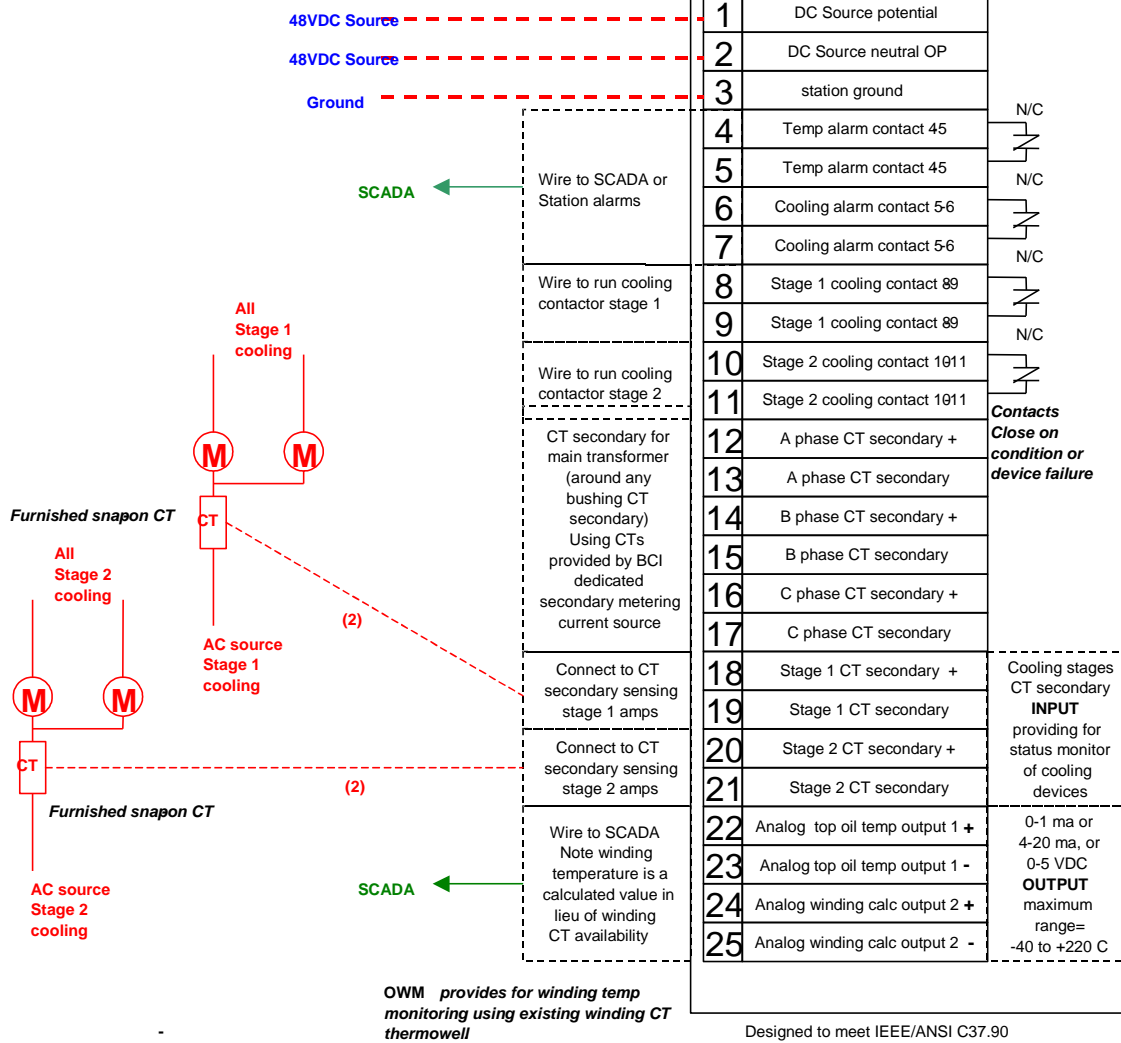
PAGE 1 of 1 REVISED 616-00, jea

### CAUTION

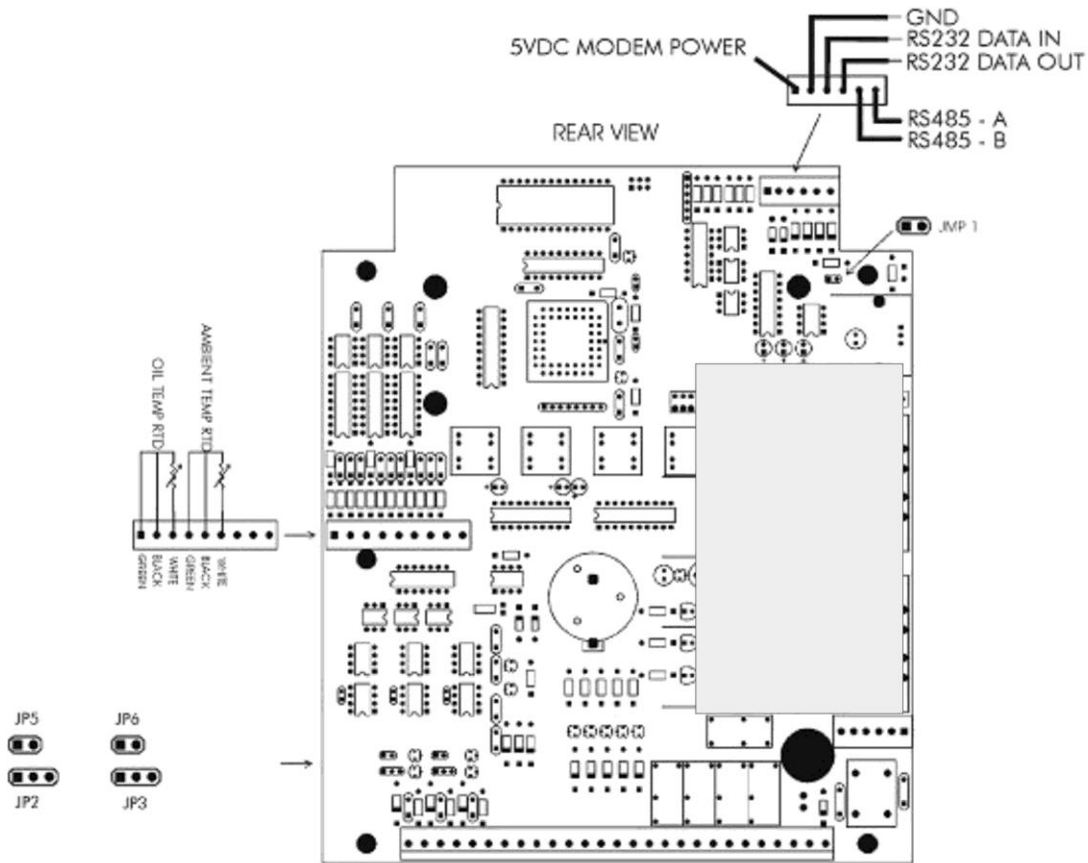
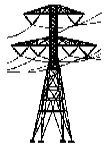
External wiring  
are shown only as  
examples, consult  
installation  
external interface

The solid state TTM unit  
monitors oil temperature,  
calculates winding  
temperature for a single  
phase or three phase  
transformer contained in one  
oil filled unit, and is ready to  
provide input for existing  
SCADA system

### TTM TB1



TTM-48 DC Functional Diagram

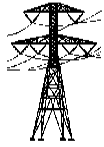


## CONFIGURATION JUMPERS: ( \* = DEFAULT )

JP3	Top Oil Analog Output	Jumper on 1&2 – Enables Voltage <b>Jumper on 2 &amp; 3 - Enables Current *</b>
JP2	Winding Analog Output:	Jumper on 1 & 2 - Enables Voltage <b>Jumper on 2 &amp; 3 - Enables Current *</b>
JP6	Top Oil Analog Output	Jumper on - 4 to 20 ma <b>Jumper off - 0 to 1 ma *</b>
JP5	Winding Analog Output	Jumper on - 4 to 20 ma <b>Jumper off - 0 to 1 ma *</b>
JMP1	RS485 Termination.	Jumper on – RS485/Enables 120 Ohm termination * <b>(Remove for RS232)</b>







## FRONT PANEL LED INDICATORS AND ALARMS

EACH LED INDICATOR WILL LIGHT CONTINUOUSLY WHILE AN ALARM CONDITION IS PRESENT. EACH LED WILL BLINK IF THE ALARM CONDITION IS NO LONGER VALID. BLINKING WILL CONTINUE UNTIL THE TTM-48 DC HAS BEEN RESET BY PUSHBUTTONS. This feature is useful to identify the cause of short term alarm conditions.

---

## EXPLANATION OF HYSTERESIS

The HYSTERESIS setting is a deadband adjustment for toggling an event or alarm. It is there to increase stability and prevent fast on-off operations of alarms and events.

Example 1: (HYSTERESIS = 2.0 deg C and Alarm is set for 60 Deg C.)

Alarm is activated at 60 Deg. C (After ALARM TIME DELAY)

Alarm will not reset until temperature is reduced to 58 Deg. C.

Example 2: (HYSTERESIS = 2.0 deg C and cooling stage #1 is set to start at 50 Deg C.)

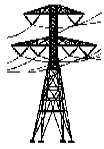
Cooling starts at 50 Deg. Cooling stage #1 runs until temperature is reduced to 48 Deg. C.

(This will prevent repeated application of starting current to the cooling motors)

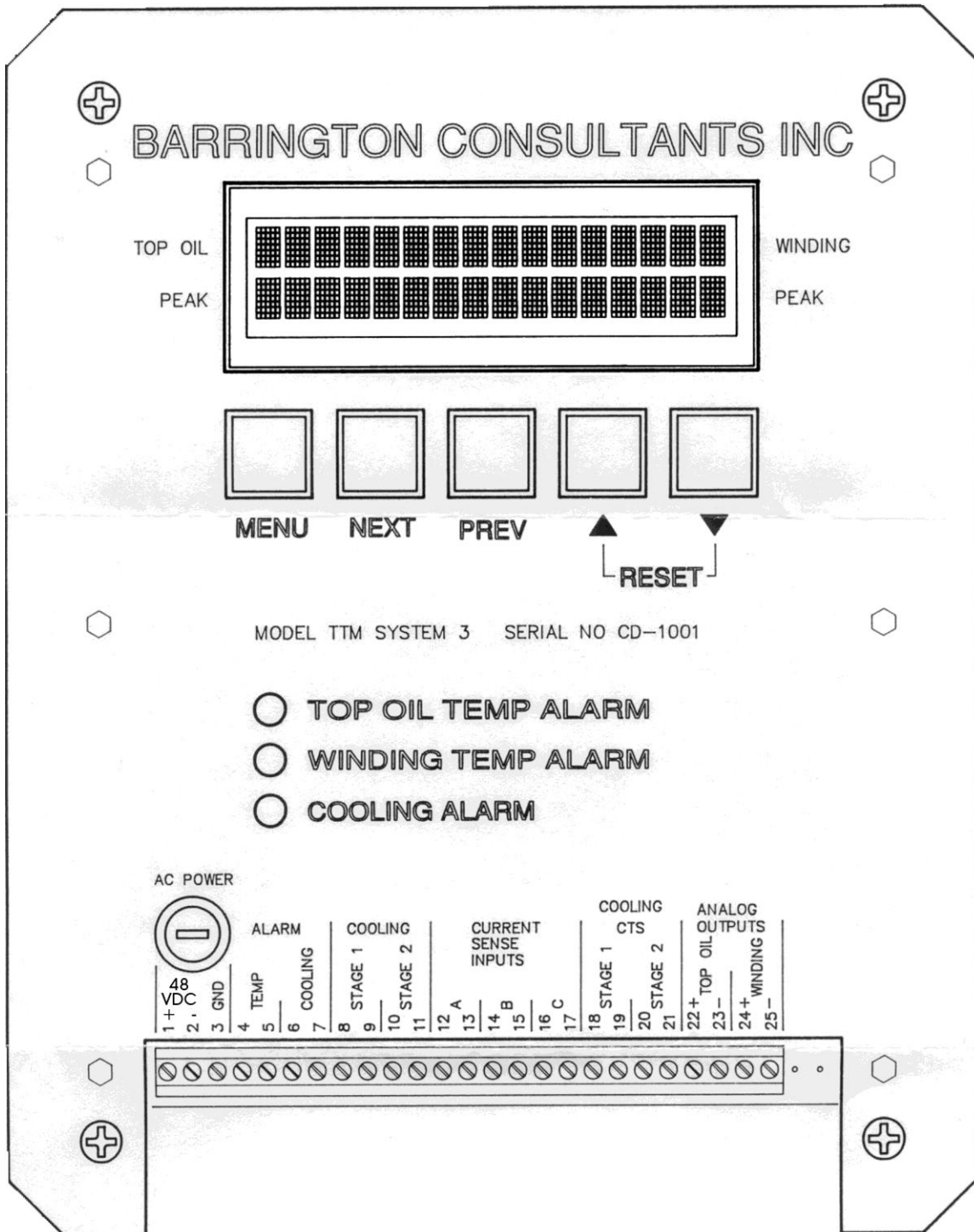
---

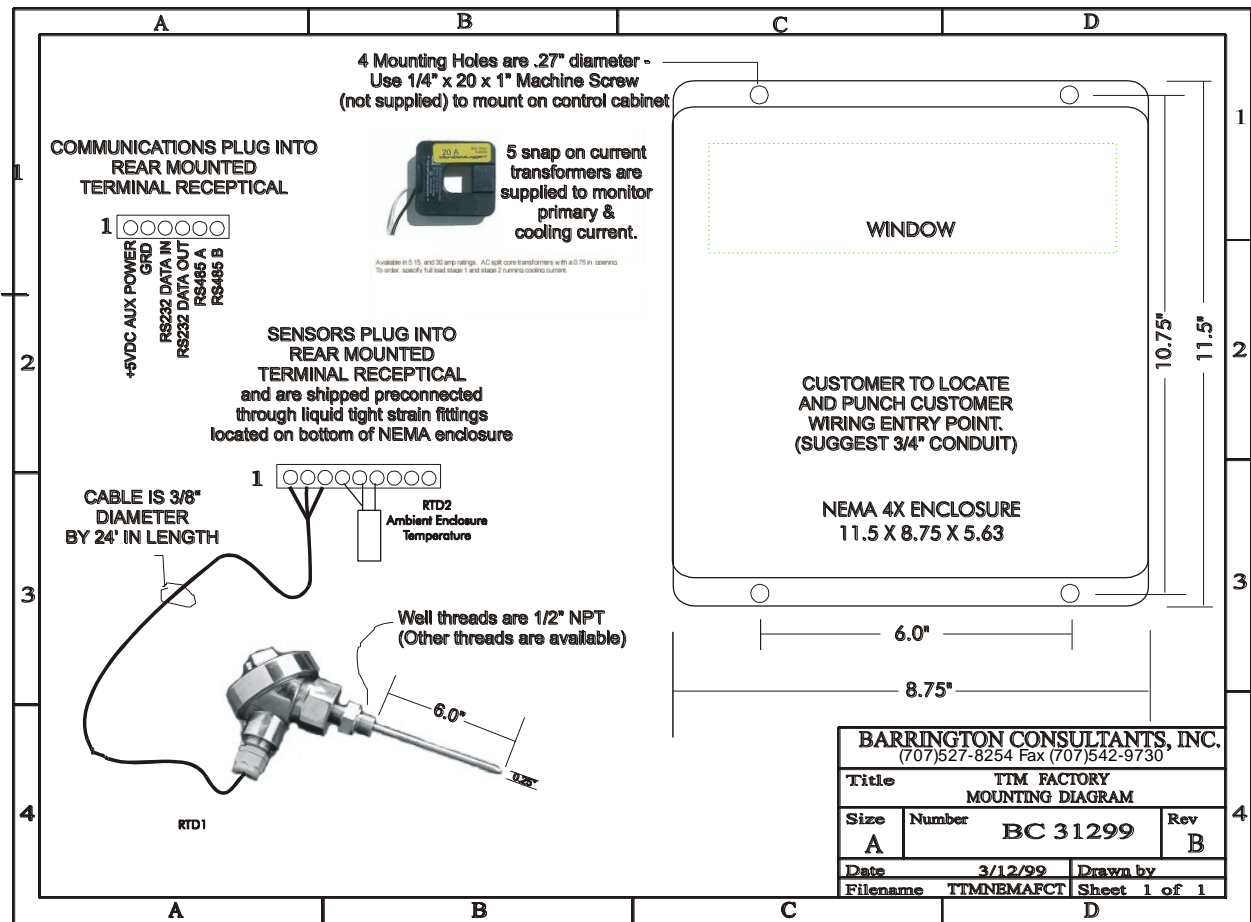
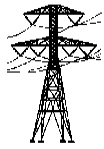
**Lookback setback example:** Given lookback period setting= 96 hours; Lookback temperature setting=+33 C ("+" sign not entered on TTM-48 DC ); Lookback hours setting= 8 hours; and Lookback setback= 10 C. In a rolling window of 96 hours from any present hour, when there have been 8 cumulative hours during which the ambient temperature exceeded 33 C (91.4 F), the cooling devices start point will be biased to initiate 10 degrees C less than the TTM-48 DC display cooling mode entered set point.

---



## II. TTM-48 DC INSTALLATION GUIDE

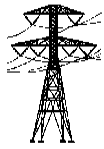




All relay contacts are normally closed until power is applied to the TTM-48 DC . This will provide a “fail safe” mode of operation. Before installation, always safety check your work area, review your plans, and apply caution to preclude accidents, errors, or undesired outcomes.

## FIELD MOUNTING & INSTALLATION

1. Mount the TTM using four machine screws.
2. Punch and mount a 3/4” conduit elbow from the underside of the TTM to the interior of the control cabinet. Provide rated power (48VDC) to the TTM.
3. Install the temperature probe. The temperature probe supplied is 1/4” X 6” (spring loaded). For field orders an adapter sleeve for 1/4” to 1/2” is also supplied. Additionally an adapter is supplied for 1/2” NPT to 7/8” X 14 thread thermowells. Coil up the extra probe cable and tie wrap, or shorten to desired length.
4. Factory orders include a 1/2”NPT Brass Thermowell and no adapters are included.
5. Set the analog out put jumpers on the back of the circuit board for the desired analog output modes. (see page #5) 0-1 ma is the factory default
6. Configure the TTM (Using the Configuration Menu) for the same analog scaling values selected above.
7. Connect the top oil / winding alarm contact point to an existing annunciation system. The contacts are “dry” and are compatible with existing annunciators.
8. Snap the A, B, & C phase snap on current transducers around the high or low side bushing CT secondaries. (Shorting blocks should be available in the control cabinet for easy accessibility) Wire them to the CURRENT SENSE input terminals. (12-17)



9. Snap the stage one and stage two snap on current transducers around the power source to each stage of cooling. (Usually available and located at the cooling stage contactor.) Wire them to the cooling CT input terminals. (18-21)

## CALIBRATING MAIN TANK AND AMBIENT TEMP ANALOG OUTPUT VALUES

*Pressing "NEXT" AND "PREVIOUS" at the same time enters the calibration mode.*

1. Determine which analog output is desired and configure the jumpers on the rear of the circuit board. Note: Remove the 120 ohm termination jumper (JMP1) for RS232 applications. The following is a description of the 0 – 1 mA calibration procedure.
2. Enter the configuration mode by pressing menu and holding for 3 seconds.
3. Configure the analog outputs to match the output jumpers selected in step 1.
4. Press "MENU" (or wait for 30 seconds) to return to the default four temperature display.
5. Enter calibration procedure by pressing "NEXT" AND "PREV" AT THE SAME TIME.
6. Display will read ANALOG #1.
7. With a very accurate DC ammeter, read current across analog output #1.
8. Current should read 1.000 DC ma.
9. Using the up and down arrows, adjust the output voltage to read 1.000 DC mA.
10. Pressing "NEXT" will display ANALOG OUTPUT #2.
11. Repeat steps 7 and 8 for analog #2.
12. Press the "MENU" key (or wait for 30 seconds) to return to normal operation.

## CALIBRATING STAGE 1 AND STAGE 2 100% CURRENT VALUES

*Pressing "NEXT" AND "PREVIOUS" at the same time enters the calibration mode.*

1. After entering the calibration mode, press next until the Stage#1 display appears.
2. While stage #1 cooling is running, adjust the percentage to 100%. Use up or down arrow to nudge the percentage values. Note: Pressing both the up and down arrows simultaneously will automatically set the 100% value. The current transformer normally supplied is rated for 15 amps AC cooling current. (Other ranges are available)
3. Press next until the Stage#2 display appears.
4. While stage #2 cooling is running, adjust the percentage to 100%. Use up or down arrow to nudge the percentage values. Note: Pressing both the up and down arrows simultaneously will automatically set the 100% value. The current transformer normally supplied is rated for 15 amps AC cooling current. (Other ranges are available)

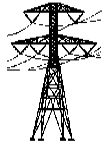
## CALIBRATING A B & C PHASE 100% CURRENT VALUES

**THE TTM-48 DC IS SET AT THE FACTORY FOR 5 AMPS SECONDARY EQUALS 100% PRIMARY CURRENT.**

*Pressing "NEXT" AND "PREVIOUS" at the same time enters the calibration mode.*

**(METHOD #1)**

1. After entering the calibration mode, press next until the PHASE A display appears.
2. While applying 5 amps (or full scale secondary CT rated current) through the A PHASE snap on current transformer, adjust the percentage to 100%. Use up or down arrow to nudge the percentage values. Note: Pressing both the up and down arrows simultaneously will automatically set ("LEARN") the 100% value.
3. Press next until the PHASE B display appears.
4. While applying 5 amps (or full scale secondary CT current) through the B PHASE snap on current transformer, adjust the percentage to 100%. Use up or down arrow to nudge the percentage values. Note: Pressing both the up and down arrows simultaneously will automatically set the 100% value.
5. Press next until the PHASE C display appears.
1. While applying 5 amps (or full scale secondary CT current) through the C PHASE snap on current transformer, adjust the percentage to 100%. Use up or down arrow to nudge the percentage values. Note: Pressing both the up and down arrows simultaneously will automatically set the 100% value.



**(METHOD #2) This calibration method is useful for installation on in service transformers**

1. Determine the current percentage of full load current.
2. After entering the calibration mode, (NEXT AND PREVIOUS) press next until the PHASE A display appears.
3. Adjust the calibration percentage (USING THE UP AND DOWN ARROWS) to match the actual percentage.
4. Press NEXT to display PHASE B.
5. Repeat step 3.
6. Press NEXT to display PHASE C.
7. Repeat step 3.

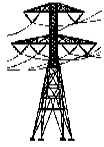
The display "Full Scale Rise" refers to the winding temperature increase above Top Oil temperature furnished by the manufacturer. The TTM-48 DC calculates the winding temperature as a direct degree (C) increase over top oil temperature based upon this data. Using the configuration menu enter the full scale winding temperature increase over the oil temperature provided by the transformer manufacturer's heat run data. This data refers to the C temperature difference between the transformer main tank oil temperature and the winding temperature at full rated load. *The referenced value is not nameplate ambient temperature rise.* The winding temperature is calculated based upon the highest of the three current values. If the manufacturer's value has been de-rated or modified by your authorized in-house actions, use the value specified by your authorized alternative sources.

For installation on single phase transformers connect only one of the snap on CTs.

Barrington consultants would appreciate any feedback about the TTM-48 DC . We want to provide top quality products to satisfied customers. We will be happy to answer any questions you might have about installation or operation of our products.

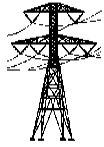
**It is the user's responsibility to determine proper set points, adequately engineer, test, install, and ensure desired operating status.**

**Barrington Consultants Inc. assumes no responsibility for installation or user operation of the TTM-48 DC .**



## TTM-48 DC SPECIFICATIONS

RTD	-100°C to 600°C (DIN 43760 Class B) .00385 ohms/ohm/ °C
STABILITY	Maximum change in ice point resistance of less than 0.2°C/Year
REPEATABILITY	0.05% of actual span
INPUT	Dual Pt 100 RTD (One Top Oil Temp & One Ambient Temp)
TOP OIL INPUT PROBE TYPE	(1ea) 6" X 1/4" probe W 1/2" NPT Thread (7/8" X 14 thread adapter supplied) or (1ea) 75LB Pull Surface Magnetic
INPUT PROBE CABLE	24' type UV/SJT
INPUT SPAN	-40°C Min 200°C Max
ANALOG OUTPUT	0 - 5V, 0-1mA or 4-20mA (Independently selectable)
CALIBRATION	Automatic -40°C to 200°C
LINEARITY	Better than 0.2% of span
LEAD WIRE COMP.	Automatic - 3 wire
TEMPERATURE STABILITY	Better than .03% /°C of span
Surge Withstand	Designed to meet ANSI/IEEE C37.90
C.M.R.R.	120db DC to 60 Hz
POWER SUPPLY RANGE	36 TO 75 VDC (auto-polarity-sensing)
OPERATING TEMP.	-20°C (-40 optional heater) to +75°C
ENCLOSURE	NEMA 4 10" X 8" X 6"
<u>DIGITAL RESOLUTION:</u>	>12 bits.
<u>OVERALL ACCURACY</u>	Less than 0.3°C input temperature / display
<u>ALARM:</u>	Dry contact spst relay output rated @ 5A 250 VAC.
<u>ALARM RESPONSE TIME:</u>	Programmable - .1 sec to 999.9 sec.
<u>ALARM HYSTERESIS</u>	0.1 TO 100 DEG C (DEAD BAND)
<u>DISPLAY:</u>	16 × 2 Character .39" LCD indicator for programming and display of input and output parameters and status.
<u>SUPPLY:</u>	DC: 48 VDC Nominal range 36 to 75 VDC
<u>OPERATING CONDITIONS:</u>	-20°C to +75°C. 0-95% RH, non condensing.
<u>STORAGE TEMP.:</u>	-55°C to 105°C.
<u>HUMIDITY:</u>	0-95% RH, non condensing.
<u>TURN-ON TIME:</u>	Within 30 seconds to rated response.
<u>RESPONSE TIME:</u>	25 seconds to 99% of reading. (1 update/second).
<u>DAMPING FACTOR:</u>	3.0 Seconds.
<u>TTM-48 DC LONG TERM STABILITY:</u>	Less than ±0.1% of span for six months.
<u>(D/A) LINEARITY:</u>	±0.05% of span.
<u>LINEARIZATION:</u>	better than ±0.03°C for Pt-100 RTD,
<u>CALIBRATION:</u>	adjustable on-site, factory preadjusted



**TTM-48DC**, Transformer Temperature Monitor, Complete with  
Standard 6" 1/2"NPT thread replacement RTD well probe, 24ft  
SJT UV treated connector cables, 5 Snap-On current transformers,  
SCADA ready outputs for Top Oil, Calculated Winding Temperatures,  
Two adjustable dry contacts for temperature and cooling alarms,  
Ambient compensation, 2 stage cooling control, Four display readout  
with Top oil, Calculated Winding, Peak Top oil, and Peak Winding  
temperatures, RS232/485/485 multipoint communications.  
NEMA type 4x windowed enclosure. **Delivery - Stock to 6 weeks ARO**

The TTM-48DC may be special ordered with the following options:

- 1 Trip option – TTM-48DC-T
2. Top Oil and/or Winding Temperature TRIP capability
3. Various Cooling CT ratios. 5, 15, 30, 50, 100 Amp
4. Substitute Magnetic surface mount RTD temperature probe instead of thermowell  
RTD probe.
5. 1/4" x 6" 1/2"NPT Brass Thermowell
6. 7/8 x 14 thread adapter for 7/8 x 14 thermowell

\*\*\*\*\*